

## Company profile

Through continual technical development we are recognised in the industry as leaders in render application and associated systems for any sized project(s)

## Technical support and design

Based in the midlands we are continually expanding our product range and application specialists to handle an ever increasing demand for new and restoration projects. Our dedicated team will endeavour to recommend the best solution to your individual situation. Due to our extensive product range and experience we offer entry level products for the tighter budget, but we pride ourselves in offering new innovative premium products with world class performance. The technologies we use are tried and tested, they have been relied upon for over 35 years and are continually used in very diverse applications.



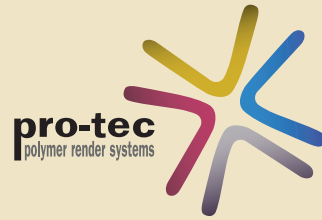
For further information or assistance please call  
**Call** : 07943 113663 or +44(0)1773 747655 **Email** : info@pro-tecrender.co.uk  
www.pro-tecmidlands.co.uk

pro-tec polymer render systems is part of pro-tec property maintenance ltd

# LEADING THE WAY IN **TRADITIONAL & POLYMER RENDER**



**WATER REPELLENT , LOW MAINTENANCE,  
ALLOWS STRUCTURE TO BREATHE,  
EXTENSIVE COLOUR RANGE, NATURAL LOOKING FINISH**



...with silicone technology  
for water resistance that works!

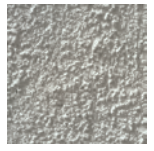


...reinforced to provide ultimate  
stability over time!



**Smooth Render**

- Crack resistant, tough and waterproof
- Excellent adhesive qualities
- Can be applied to most substrates
- Great workability – smooth in just one coat
- Pre-mixed blend of fillers, synthetic resins, co-polymers, cement and fibres



**Textured Coating**

- Chose from a wide variety of textures and colours
- Available in fine & textured mixes
- Suitable for most types of masonry and cement bases
- Heavy duty decorative finish
- Durable and weatherproof



**Wet-dash**

- Tough, flexible, waterproof, crack resistant
- Outstanding adhesive properties
- Pre-mixed blend of fillers, synthetic resins, co-polymers, cement and fibres



**Dry-dash**

- Ideal for one coat dash applications
- Excellent adhesive qualities
- High tensile and compressive strength
- Pre-mixed blend of fillers, synthetic resins, co-polymers, cement and fibres



**Masonry coating/ painting**

- Excellent weather resistance and durability
- Premixed colour palette available
- Custom colour match can be made for restoration projects
- Colour fast pigments and additives ensure the colour stays constant

